

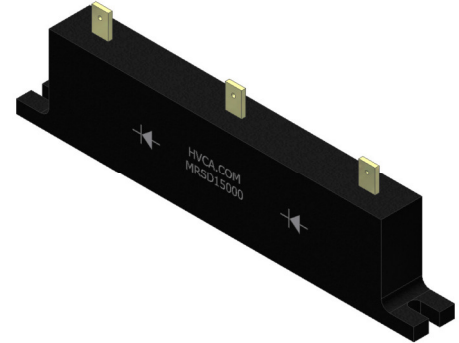


MRSD15000

15kV, 2.5A
High Voltage Flat Pack Rectifier

Features

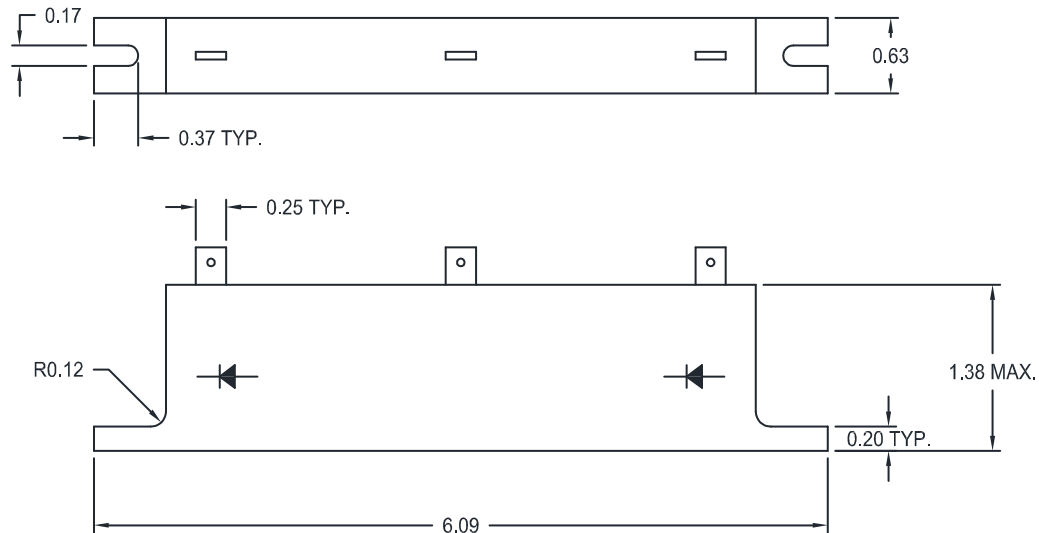
- Molded plastic body, ANSI/UL94 V-0 rated material
- RoHS compliant based on exemption: [2011/65/EC, Annex III, 7(a)]
- Dual rectifier in “Doubler” configuration



Device Electrical Characteristics

(25°C ambient temperature unless stated otherwise)

	Conditions	Symbol	Value
Repetitive Peak Reverse Voltage Per Leg		V_{RRM}	15,000 Volts
Average Forward Current Maximum	$T_A = 55^\circ\text{C}$	I_{FAVM}	2.5 Amps
Maximum Forward Voltage Drop Per Leg	$I_F = 2.5$ Amps	V_F	14 Volts
Maximum Reverse Current	$V_R = V_{RRM}$	I_R	0.5 μA
Maximum Surge Current	8.3msec, Half Sine	I_{FSM}	150 Amps
Maximum Junction Temperature	-	T_J	150°C
Storage Temperature Range	-	T_{STG}	-40°C to 150°C



Mechanical Characteristics (inches)