



HVPSI

2192 Series

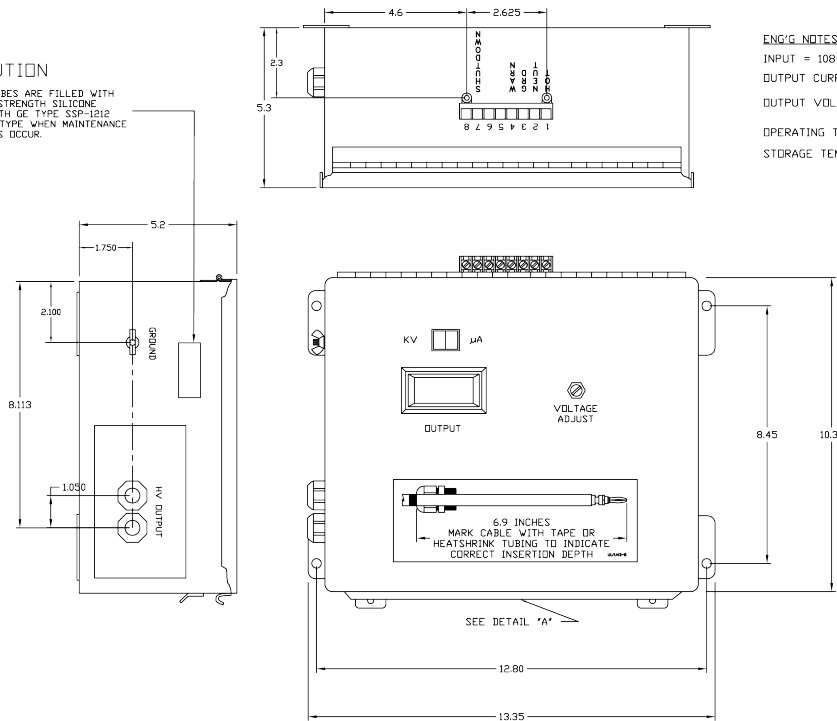
High Voltage Power Supplies

- Cost Effective
- Metal Case NEMA 1
- Reliable Solid-State Design
- Maintenance Free
- High Load Current Alarm Contacts
- Shutdown (overload) Alarm Contacts
- HV Meter on Front Panel to Monitor Output (Voltage & Current)
- Automatic Over-Current Shutdown and Recovery
- High Frequency Switch-Mode Design
- RoHS Versions Available



	Conditions	Value	Units
Input			
Input Voltage	All Versions	120	VAC
Power	At Max load	25	W
Output			
Voltages Available	Primary Output	-100	kVDC max
Voltage Adjustment	Front Panel Potentiometer	60% to 100%	-
Power	Nominal Input, Max Vo	15	W
Current	Nominal Input, Max Vo	0.175	mA
Voltage Regulation	Any Static Load, Max Vo	<20%	VDC
Line Regulation	Over Input Range	<1%	VDC
Ripple	Full Load, Max Vo	<1%	Vp-p
Stability	Over 8hr, 30 min warm up	<1%	VDC
Environmental			
Operating Temperature	Case Temp, Full Load, Max Vo	0 to +60	°C
Temperature Coefficient	Over the Operating Temperature	0.06	%/°C
Storage	Non-Operating, Case Temp	-40 to +85	°C
Humidity	Non-Condensing	0 to 95%	RH
Altitude	Standard Operating Conditions	0 to 10000	Feet

CAUTION
 THESE HV OUTPUT TUBES ARE FILLED WITH HIGH DIELECTRIC STRENGTH SILICONE GREASE. REPLACE WITH GE TYPE SSP-1212 OR HVPSI APPROVED TYPE WHEN MAINTENANCE LOSSES OCCUR.



ENG'G NOTES

INPUT = 108-132 VAC, 50/60Hz
 OUTPUT CURRENT = RATED 175 μ A, 100KV
 OUTPUT VOLTAGE = (A) OPERATING: -60KVDC TO -100KVDC
 VARIABLE \pm 10%
 OPERATING TEMPERATURE RANGE = 0° TO 60°C
 STORAGE TEMPERATURE RANGE = -40° TO 85°C

TERMINAL IDENTIFICATION

1. 120V HDT
2. 120VAC NEUTRAL
3. GROUND
4. RELAY CONTACT: CLOSURES @ 90% LOAD (OPEN DURING NORMAL OPERATION)
- 5.6 NO CONNECTION
7. ALARM CONTACT: CLOSURES @ SHUTDOWN, > 200 μ A (OPEN DURING NORMAL OPERATION)
8. COMMON CONTACT FOR TWO RELAYS

DETAIL "A"

ACN2192A100
 INPUT = 120 VAC 50/60Hz 50 Watts Max
 OUTPUT = -60 TO -98KV @ 175 μ A
 SERIAL NO. XXX
 DATE CODE YYMM

Part Number	Input Voltage	Input Frequency	Output Voltage	Polarity	Output Power	Maximum Output Current
ACN2192A100	120 VAC	50 / 60 Hz	Adjustable -60kV to -100kV	Negative	15 Watts	175 μ A

Applications:

- Electrostatic Paint Spray
- Electrostatic Seasoning Application
- Electrostatic Oil Spray

Mechanical:

- Relay/Input Termination: Terminal strip located externally on enclosure
- High Voltage Termination: Tubular connections with integral strain relief seals, external to metal case
- Enclosure: Metal, NEMA 1, with hinged cover and knockouts
- Operating Temperature Range: 0°C to +60°C
- Storage Temperature Range: -40°C to +85°C

NOTICE: This power supply requires adequate ground connection for operation. Failure to provide ground may result in failure of the power supply.