

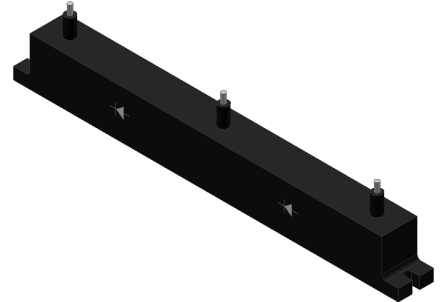


1N52A1

26 kV, 700 mA
High Voltage Doubler Rectifier

Features

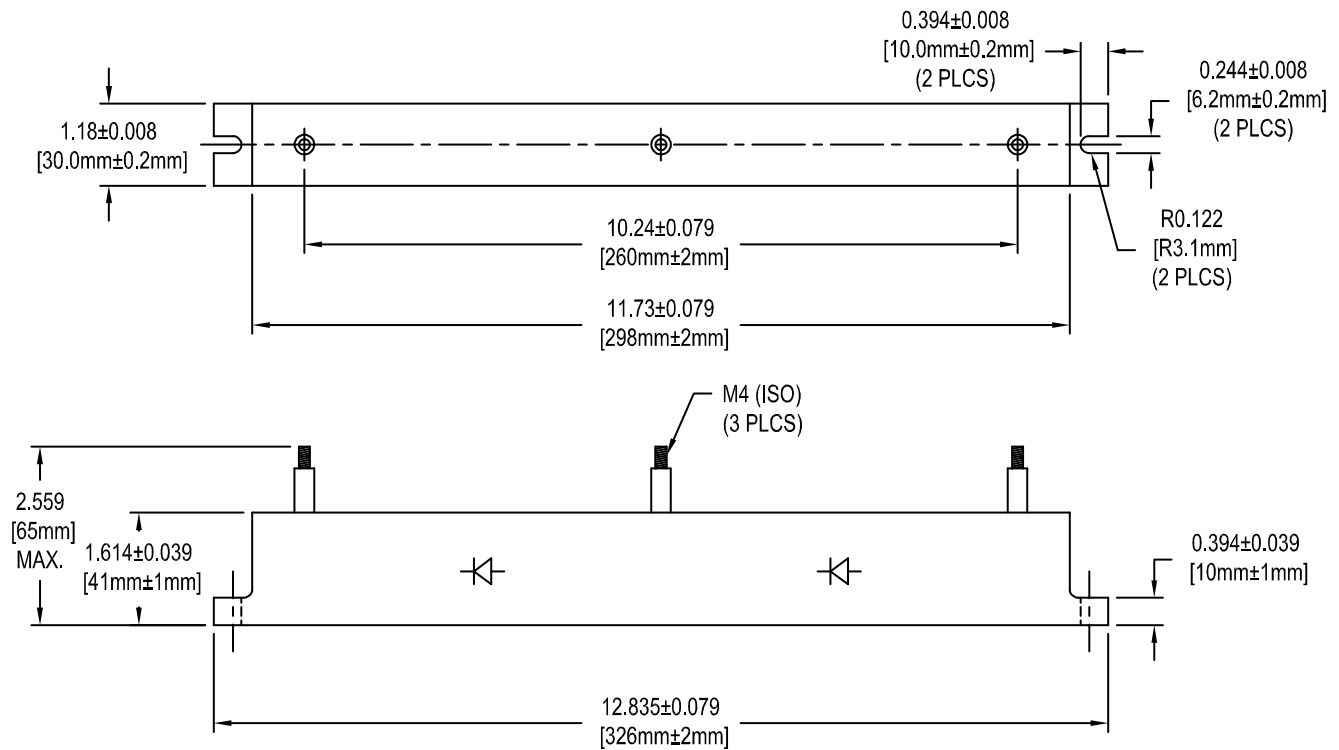
- Epoxy encapsulated 26 kV per leg rectifier
- Built with RoHS compliant materials



Device Electrical Characteristics

(25°C ambient temperature unless stated otherwise)

	Conditions	Symbol	Value
Maximum Repetitive Peak Reverse Voltage Per Leg (Center Terminal to Either End Terminal)		V_{RRM}	26,000 Volts
Average Forward Current Maximum Per Leg	$T_A = 55^\circ\text{C}$	I_{FAVM}	700 mA
Maximum Forward Voltage Drop Per Leg	$I_F = 1.5 \text{ A}$	V_F	27 Volts
Maximum Reverse Current Per Leg	$V_R = V_{RRM}$	I_R	400 μA
Maximum Surge Current	8.3msec, Half Sine	I_{FSM}	60 Amps
Maximum Junction Temperature	-	T_J	150°C
Storage Temperature Range	-	T_{STG}	-20°C to 150°C



ALL DIMENSIONS ARE IN INCHES [mm]